

MEETING SPACE SPECIFICATIONS

NCAA Hall of Champions and Conference Center



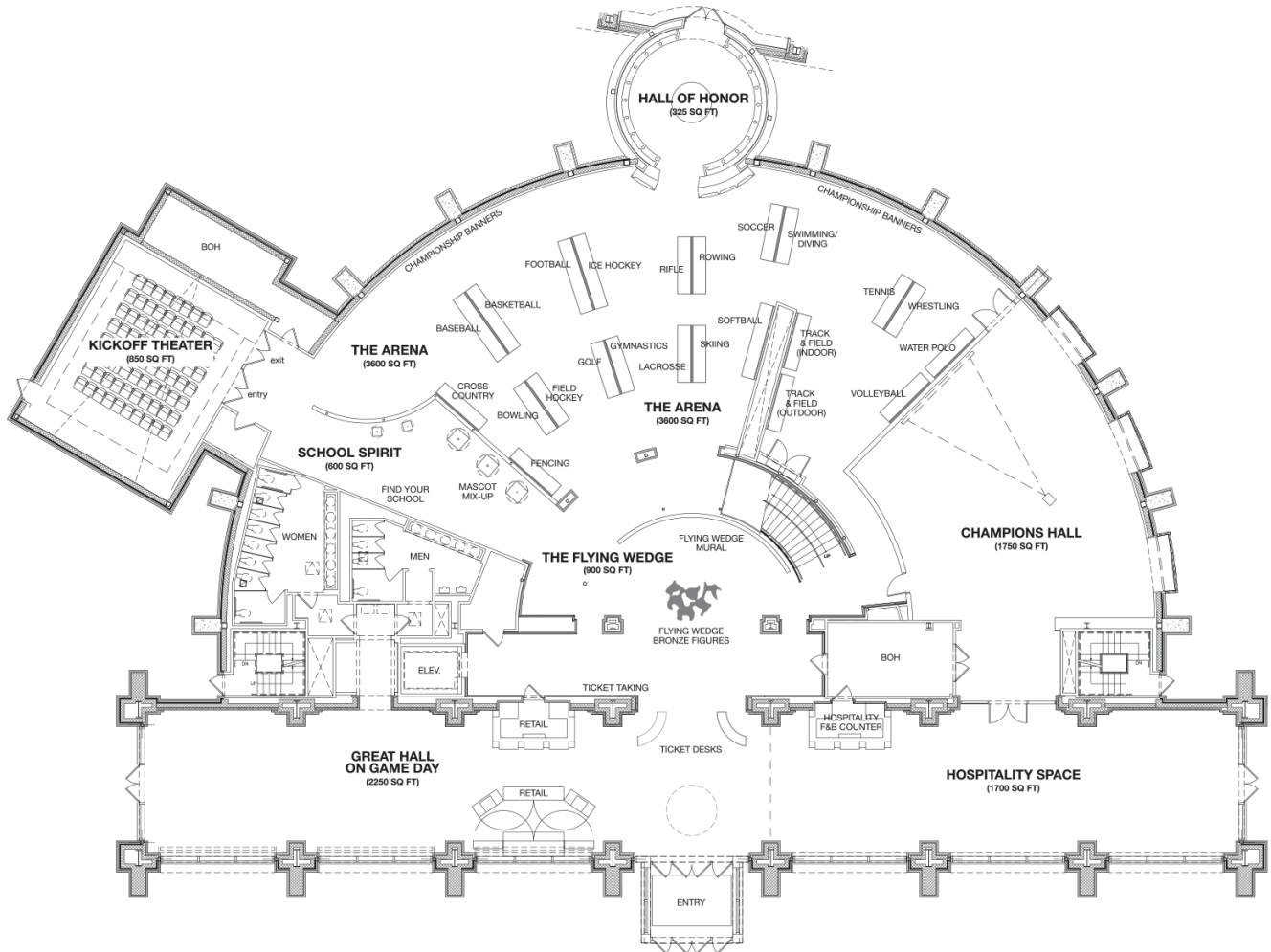
**NCAA Hall of Champions
and Conference Center**
 700 West Washington Street
 Indianapolis, IN 46204
 317.916.4255
 Meeting Rooms: 19
 Square Footage of Meeting Rooms: 30,000

We are the location that will set your meeting or event apart. From a 10-person boardroom meeting to a 350-person formal dinner, the NCAA Hall of Champions and Conference Center has space that will exceed expectations. The Hall of Champions museum provides rooms for dining and two floors of interactive exhibits, including a half-court 1930's era gymnasium and sport simulators. Our Conference Center features the elegant Christine Grant Ballroom with floor-to-ceiling windows overlooking beautiful White River State Park. The special touches provided by our catering and event staff will ensure that your guests have a memorable experience.

Name	Sq. Ft.	Banquet	Theater	Classroom	Conference	Reception	Square	U-Shape
Brand Building								
Christine Grant Ballroom	5,351	350	550	220		500		
Theodore Roosevelt	1,330	50	98	40	24			
Pat Summitt/John Wooden	2,105	100	140	64	36			
Jesse Owens	1,676	80	120	54	24			
Althea Gibson	493				14			
Charlotte West	388				10			
Hall of Champions								
Champion Hall	1,750	100	120	50			30	22
Great Hall	3,950	110						
Gallery	1,350	80	100	40			25	20
Entire Facility	30,000					400		
Dempsey Building								
Palmer Pierce Ballroom	2,405	180	210	96	46			
Chancellors and Presidents	740				24	240		
Auditorium	2,030			120				
Alumni	120				4			
Varsity	96				4			
Billy Mills	240				10			
James Frank	532				15			
Directors	156				6			
Faculty	156				6			
Judith Sweet	304				10			

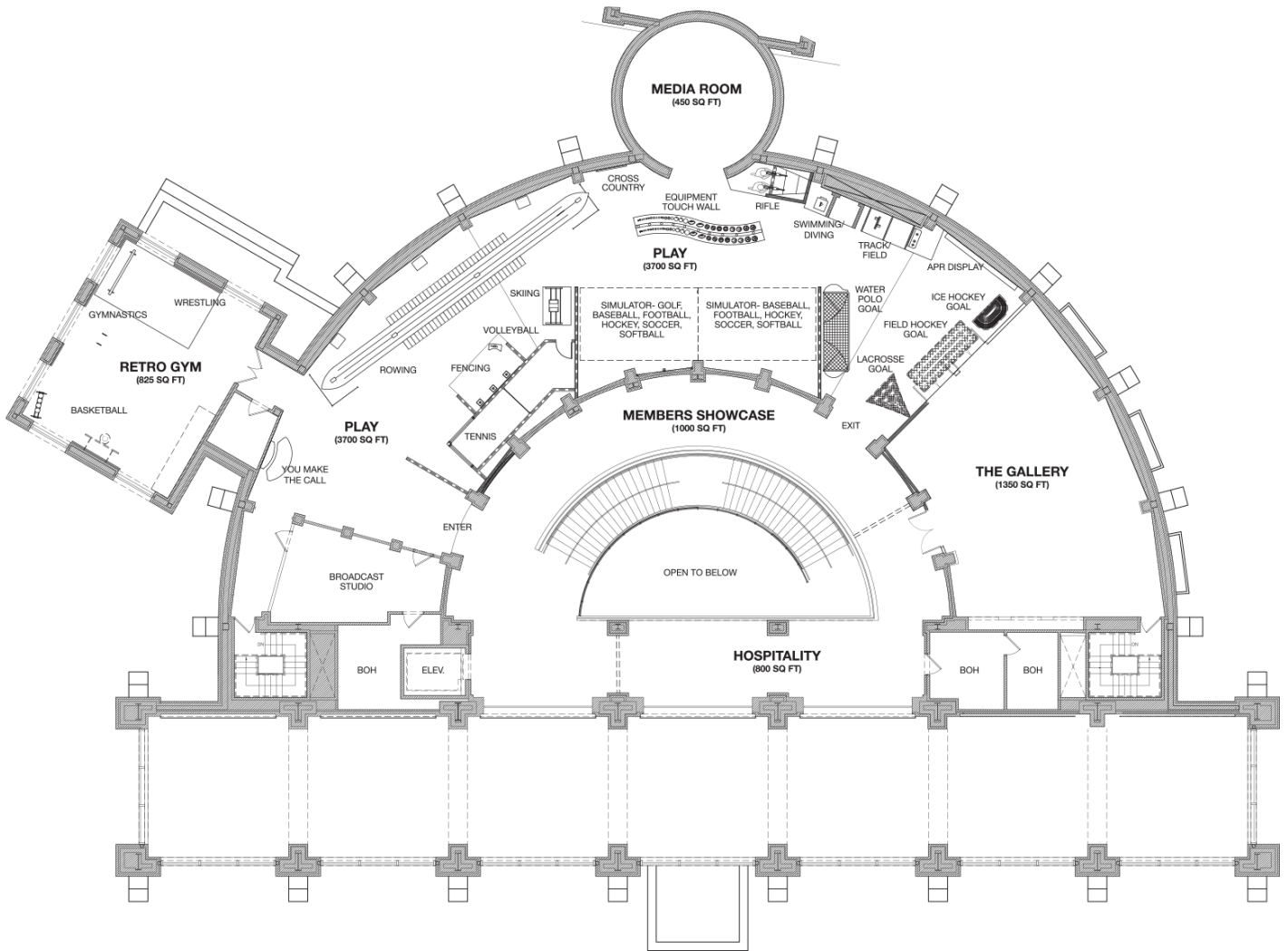
MEETING SPACE SPECIFICATIONS

NCAA Hall of Champions and Conference Center



MEETING SPACE SPECIFICATIONS

NCAA Hall of Champions and Conference Center



MEETING SPACE SPECIFICATIONS

NCAA Hall of Champions and Conference Center



BRAND BUILDING

DEMPSEY BUILDING

