

MEETING SPACE SPECIFICATIONS

Omni Severin Hotel



Omni Severin Hotel

40 W. Jackson Place

Indianapolis, IN 46225

317-634-6664

Sleeping Rooms: 424

Meeting Rooms: 18

Square Footage of Meeting Rooms: 17,000

Description

For comfortable, productive business meetings and events, the Omni Severin Hotel is the ideal choice. Built in 1913, this classic property remains one of Indianapolis' premier hotels with 424 elegantly appointed guest room accommodations. Located in the heart of downtown, the Omni Severin Hotel is connected via skywalk to Nordstrom, Circle Centre mall and the Indiana Convention Center. In 2005 the four-diamond hotel renovated all of its event and public space and boasts 17 unique meeting rooms with 17,000 square feet of function space, including the 4,640-square-foot historic Severin Ballroom.

In-Room Features

Alarm Clock | Coffee Maker | Desk & Chair | Hair Dryer | Handicap Accessible | Internet Access - Dial Up
Iron | Mini Bar | Robes | Room Service | Sitting Area | Non-Smoking Rooms | Voice Mail
Internet Access - High Speed (free)

Property Features

Baggage Handling/Bell Service | Catering Available | Children's Activities | Concierge
Exercise/Fitness Room | Gift Shop | Kitchen | Restaurant and/or Lounge On Site | Room Service
Snack Bar/Shop | Swimming Pool (Indoor) | Walk to Attractions | Walk to Restaurants | Walk to Shopping
Business Center | In-House Audio-Visual Service

Parking Services

On Site Valet Parking | Parking Nearby

MEETING SPACE SPECIFICATIONS

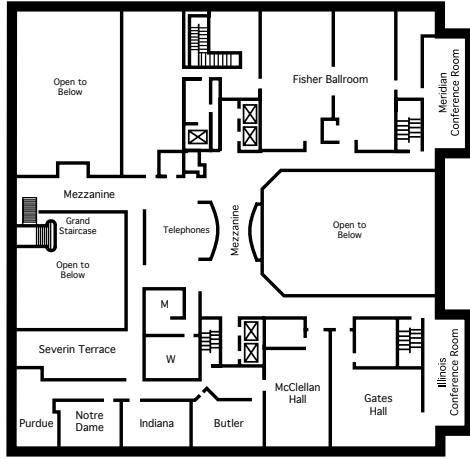
Omni Severin Hotel



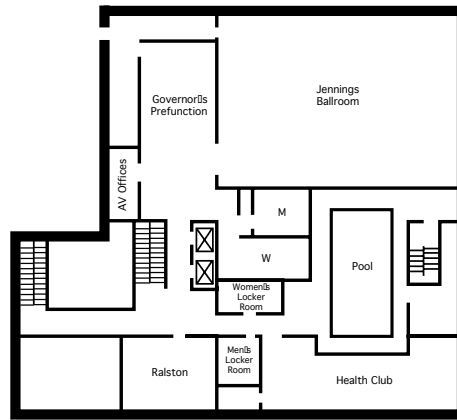
Name	Total Sq. Ft.	Room Size	Ceiling Height	Classroom	Theatre	Banquet 8/10	Reception	Conference	U Shape	H Shape	10x10s
Jennings Ballroom	3,036	46X66X12	12	150	200	248/200	316	n/a	n/a	50	15
Ralston	620	20X31X9	9	25	30	40/30	50	n/a	n/a	14	4
Severin Ballroom	2,440	40X61X15	15	100	130	200/150	253	n/a	n/a	55	12
Sycamore Boardroom	405	15X27X9	9	15	30	30/30	40	n/a	n/a	12	5
Popular Boardroom	522	18X29X9	9	n/a	n/a	n/a	n/a	n/a	n/a	n/a	n/a
Peony Boardroom	414	18X23X9	9	n/a	n/a	n/a	n/a	n/a	n/a	n/a	n/a
Cardinal Boardroom	432	16X27X9	9	30	n/a	30/30	n/a	n/a	n/a	12	5
Fisher Ballroom	2,438	46X53X11	11	150	250	180/140	263	n/a	n/a	60	12
Fisher A	1,219	23X53X11	11	50	120	90/70	132	n/a	n/a	30	10
Fisher B	1,219	23X53X11	11	50	120	90/70	132	n/a	n/a	30	10
Gates Hall	1,116	31X36X9	9	75	100	80/60	75	n/a	n/a	30	6
McClellan	1,014	26X39X9	9	72	100	80/70	75	n/a	n/a	26	6
Meridian Conference Room	640	16X40X9	9	25	50	35/35	50	n/a	n/a	12	8
Illinois Conference Room	640	16X40X9	9	25	50	35/35	50	n/a	n/a	12	8
Butler	513	12X27X9	9	15	35	20/20	40	n/a	n/a	14	5
Indiana	513	12X27X9	9	15	35	20/20	40	n/a	n/a	14	3
Notre Dame	450	18X25X9	9	15	35	20/20	40	n/a	n/a	12	5
Purdue	435	15X29X9	9	15	35	20/20	40	n/a	n/a	12	5

MEETING SPACE SPECIFICATIONS

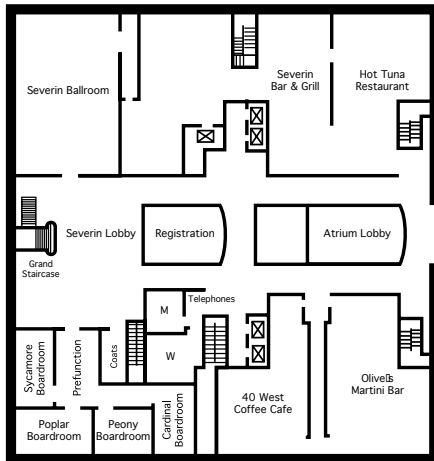
Omni Severin Hotel



Mezzanine Level



Lower Level



Lobby Level